

FUJIK LITHIUM BATTERIES

PRODUCT CATALOGUE





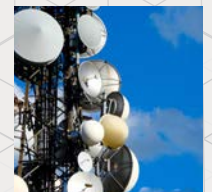
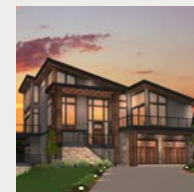
INTRODUCTION

MTM Traders is a vital and forward-looking division of ACM Group of Industries, playing a key role in the company's mission to power progress through innovation. Specializing in the trading of premium-quality solar panels, inverters, and UPS systems, MTM Traders has earned a reputation for delivering reliable, energy-efficient solutions across Pakistan. Now, stepping into the future, MTM Traders proudly introduces cutting-edge Lithium-Ion Phosphate (LiFePO₄) batteries to the Pakistani market.



OVERVIEW

Lithium-Ion Phosphate batteries represent a major breakthrough in modern battery technology. As a standout member of the lithium battery family, LiFePO₄ batteries are globally recognized for their unmatched safety, extended lifespan, and superior performance. Their stable chemical structure reduces the risk of overheating and combustion, making them a safer alternative for both residential and industrial applications. With longer cycle life, higher thermal stability, and rapid charging capabilities, LiFePO₄ batteries are revolutionizing energy storage solutions—powering the future of solar, EV, and backup power systems around the world.



F-LFP48100W

51.2V100AH Wall Mount

A smart wall mounted Household Energy Storage System with a sleek and space-saving solution for your energy storage needs. With its compact design and easy installation, it seamlessly blends into any environment.

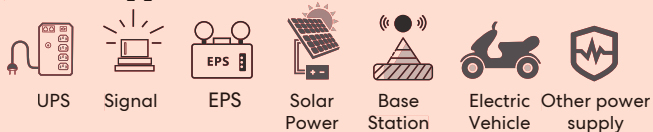
Whether at your Home, Office, Commercial & Industrial space, our wall-mounted unit provides reliable and efficient energy storage, empowering you to optimize energy usage and reduce waste.

Its design enables parallel installation to meet extended power backups.

Product Features:

- Built-in intelligent BMS with charge/discharge current limitations
- Automatic protection for overcharge/discharge and temperature conditions
- Compatible with standard rectifiers/inverters/UPS
- High reliability design
- Excellent battery life

Product Application:



Scan for Data Sheet



General Specification

Model	F-LFP48100W
Nominal Voltage	51.2V
Nominal Capacity	100Ah
Battery Energy	5120Wh
Charge Voltage	57.6~58.4V
Discharge Voltage	43.2V
Nominal Charge/Discharge Current	50A (0.5C)
Nominal Charge/Discharge Power	2560W
Max Charge/Discharge Current	100A (1C)
Max Charge/Discharge Power	5120W

Communication

Display	SOC status indicator, LED indicator
Communication	RS485, CAN

General Specification

Dimension (WxDxH mm)	520 x 141.5 x 470 (mm)
Weight (Kg)	47kg Approx.
Installation	Wall Mounted
Charge Temperature	0°C ~ 55°C
Discharge Temperature	-20°C ~ 60°C
Storage Temperature	-20°C ~ 60°C
Operating/Storage/humidity	5% - 95%RH
Max Operating Altitude	<4000m
IP Rating	IP65
Cell Type	LifePO ₄ , Lithium Iron Phosphate
Cycle life	6000 Cycles @ 80% DOD / 25°C / 0.5C
Cell Configuration	1P16S
Scalability	Max 15 batteries in parallel

Multipurpose Lithium-ion Battery F-LFP48100W 51.2V100AH Wall Mount



F-LFP48100R

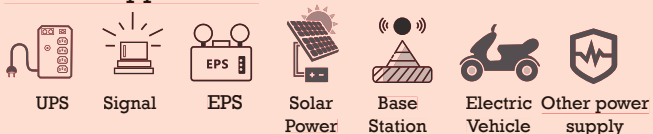
48V100AH Rack Mount

A powerful smart rechargeable LiFePO_4 intelligent energy storage unit, especially designed to provide Power Backup for Telecom Sites, IT/Data Centers and Solar Energy Storage Systems. Its design enables parallel installation to meet extended power backups.

Product Features:

- Built-in intelligent BMS with charge/discharge current limitations
- Automatic protection for overcharge/discharge and temperature conditions
- Compatible with standard rectifiers/inverters/ UPS
- High reliability design
- Excellent battery life

Product Application:



Scan for Data Sheet



Specifications	
Battery Model	F-LFP48100R
Nominal Capacity	100Ah
Nominal Voltage	48V
Battery Energy	4800Wh
Charge Voltage	54V
Discharge Voltage	40.5V
Nominal Charge/Discharge Current	50A
Nominal Charge/Discharge Power	2400W
Max Charge /Discharge Current	100A
Max Charge /Discharge Power	4800W
Communication	
Display	SOC status indicator, LED indicator
Communication	RS485, CAN
General Specification	
Dimension(W×D×H mm)	440 x 440 x 133 (mm)
Weight (Kg)	46kg Approx.
Installation	Rack Mounted
Charge Temperature	0°C ~ 55°C
Discharge Temperature	-20°C ~ 60°C
Storage Temperature	-20°C ~ 60°C
Operating/Storage/humidity	5% - 95%RH
Max Operating Altitude	≤4000m
IP Rating	IP20
Cell Type	LiFePO ₄ , Lithium Iron Phosphate
Cycle life	6000 Cycles @ 80% DOD / 25°C /0.5C
Cell Configuration	1P15S
Scalability	Max 15 batteries in parallel

Multipurpose Lithium-ion Battery F-LFP48100R 48V100AH Rack Mount



F-LFP24100W

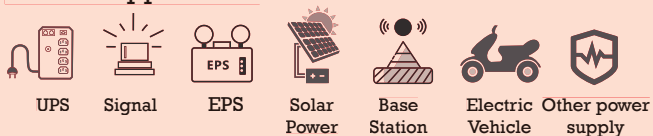
25.6V100AH Wall Mount

Smart wall mounted LiFePO₄ Household Energy Storage System (HESS), low maintenance battery with stable chemistry, sleek and space-saving solution for your energy storage needs. With its compact design and easy installation, it seamlessly blends into any environment. It provides reliable and efficient energy storage for Solar Energy and other critical Power Backup Applications, empowering you to optimize energy usage and reduce waste. Its design enables parallel installation to meet extended power backups.

Product Features:

- Built-in intelligent BMS with charge/discharge current limitations
- Automatic protection for overcharge/discharge and temperature conditions
- Compatible with standard rectifiers/inverters/UPS
- High reliability design
- Excellent battery life

Product Application:



Scan for Data Sheet



General Specification	
Model	F-LFP24100W
Nominal Voltage	25.6V
Nominal Capacity	100Ah
Battery Energy	2560Wh
Charge Voltage	29.2V
Discharge Voltage	20.8V
Nominal Charge/Discharge Current	50A (0.5C)
Nominal Charge/Discharge Power	1280W
Max Charge/Discharge Current	100A (1C)
Max Charge/Discharge Power	2560W
Communication	
Display	Touch Screen LCD display
Communication	RS485, CAN, Bluetooth
General Specification	
Dimension (WxDxH mm)	150 X 395 X 587 mm
Weight (Kg)	28kg Approx.
Installation	Wall Mounted
Charge Temperature	0°C ~ 55°C
Discharge Temperature	-20°C ~ 60°C
Storage Temperature	-20°C ~ 60°C
Operating/Storage/humidity	5% - 95%RH
Max Operating Altitude	<4000m
IP Rating	IP20
Cell Type	LifePO ₄ , Lithium Iron Phosphate
Cycle life	6000 Cycles @ 80% DOD / 25°C / 0.5C
Cell Configuration	1P8S
Scalability	Max 16 batteries in parallel

Multipurpose Lithium-ion Battery F-LFP24100W 25.6V100AH Wall Mount



F-LFP25100

25.6V100AH

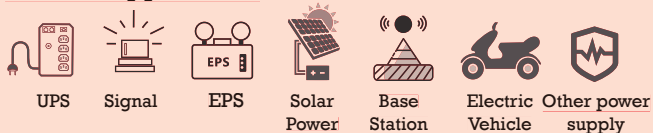
Lithium LiFePO_4 Battery offers a significant weight reduction, enormous energy reserves and stable voltage even under extreme loads. The Lithium LFP battery is specifically developed to fully meet the high demands placed on a storage battery.

It enables high safety and cyclic life span are guaranteed even with regular deep discharges with its enhanced chemistry, which offers numerous advantages in a variety of applications.

Product Features:

- LiFePO_4 cell (3.2V), higher reliability
- Longer Cycle Life
- Fully replaceable with current batteries (Lead-acid, Ni-Cd)
- Lithium iron phosphate technology, safe and reliable.
- Maintenance free with 50% lighter than lead acid batteries
- Optimum adaptation to variety of applications with series & parallel expansion support

Product Application:



Scan for Data Sheet



Nominal Characteristics:	
Nominal Voltage	25.6V
Nominal Capacity (@0.2C)	100Ah (8S1P)
Nominal Energy	2560Wh
Internal Resistance	50mΩ
Self Discharge Rate	≤3.5% per month
Cycle Life (@20-28°C, 0.2C, 90% DOD)	3650 Cycles
Parallel Connected Function	No more than 2 groups in parallel
Series Connected Function	No more than 2 groups in series
Charging Specifications	
Charging Limited Voltage/Float	28.8V/27.6V±0.2V
Charge Voltage (For Standby use)	
Max. Charging Current	60A
Discharging Specifications	
Discharging Cut-off Voltage	20.0V
Max. Discharging Continuous Current	60A
Max. Discharging Pulse Current	120A, <3S
Mechanical Characteristics	
Length	532mm
Width	206mm
Height	215mm
Total Height	217mm
Weight	Approx. 24.0Kg
Terminal	M8
Operating Conditions	
Charge Temperature	0°C~45°C (32°F to 113°F)
Discharge Temperature	-20°C to 60°C (-4°F to 140°F)
Storage Temperature	0°C to 45°C (32°F to 113°F)
Humidity	0-95%, No condensation
Temperature protection	Integrated in BMS
Safety Standard	IEC 62619 at cell level
Water Dust Resistance	IP55

Multipurpose Lithium-ion Battery

F-LFP25100

25.6V100AH



F-LFP12200

12.8V200AH

Suitable for solar energy storage system, provide emergency back up power, UPS, Inverter, Railway signalling, Telecommunication, Medical equipments, Security communications, Transportation logistics and so on.

Product Features:

- LiFePO_4 cell (3.2V), higher reliability
- Longer Cycle Life
- Fully replaceable with current batteries (Lead-acid, Ni-Cd)
- Lithium iron phosphate technology, safe and reliable.
- Maintenance free with 50% lighter than lead acid batteries
- Optimum adaptation to variety of applications with series & parallel expansion support

Product Applications



Scan for Data Sheet



Nominal Characteristics

Nominal Voltage	12.8V
Nominal Capacity	200Ah (4S2P)
Nominal Energy	2560Wh
Internal Resistance	≤35mΩ
Self Discharge Rate	<3.5% per month
Cycle Life (@25°C, 0.2C, 50%DOD)	6000 Cycles
Parallel Connected Function	no more than 4 groups
Series Connected Function	no more than 4 groups

Charging Specifications

Recommended Charging Voltage	14.0~14.6V
Max. Charging Current	100A

Discharging Specification

Discharging Cut-off Voltage	10V
Max. Discharging Continuous Current	100A
Max. Discharging Pulse Current	200 A ≤ 3S

Mechanical Characteristics

Length	522mm
Width	238mm
Height	218mm
Total Height	220mm
Weight	Approx. 27Kg
Terminal	M8

Operating Conditions

Charging Temperature	0°C ~ 45°C (32°F ~ 113°F)
Discharge Temperature	-20°C ~ 60°C (-4°F ~ 140°F)
Storage Temperature	0°C ~ 45°C (32°F ~ 113°F)
Safety Standard	UL 1642 at cell level
Water Dust Resistance	IP55

Multipurpose Lithium-ion Battery F-LFP12200 12.8V200AH



F-LFP12150

12.8V150AH

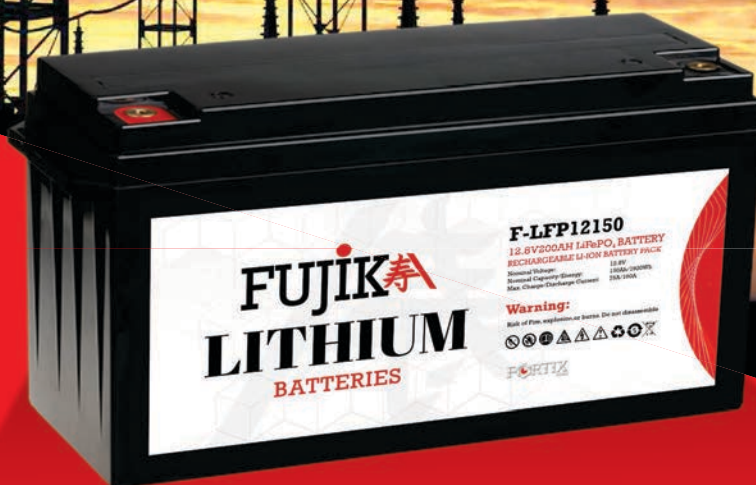
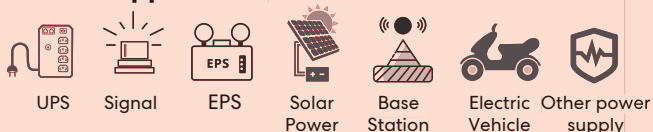
12V LFP batteries are designed for small home solar systems and other such as UPS, Signal, EPS, Solar Power, Base Station, Electric Vehicle etc.

Besides, they are also a direct replacement for lead-acid batteries. With the same size and same type of terminal, you can easily upgrade the old lead battery system into lithium.

Product Features:

- LiFePO₄ cell (3.2V), higher reliability
- Longer Cycle Life
- Fully replaceable with current batteries (Lead-acid, Ni-Cd)
- Lithium iron phosphate technology, safe and reliable.
- Maintenance free with 50% lighter than lead acid batteries
- Optimum adaptation to variety of applications with series & parallel expansion support

Product Application:



Scan for Data Sheet



Nominal Characteristics	
Nominal Voltage	12.8V
Nominal Capacity	150Ah (4S1P)
Nominal Energy	1920Wh
Internal Resistance	≤45mΩ
Self Discharge Rate	<3.5% per month
Cycle Life (@25°C,0.2C,50%DOD)	6000 Cycles
Parallel Connected Function	no more than 2 groups
Series Connected Function	no more than 4 groups
Charging Specifications	
Recommended Charging Voltage	14.0~14.6V
Max. Charging Current	75A
Discharging Specification	
Discharging Cut-off Voltage	10V
Max. Discharging Continuous Current	100A
Max. Discharging Pulse Current	200 A ≤ 3S
Mechanical Characteristics	
Length	483mm
Width	170mm
Height	240mm
Total Height	240mm
Weight	Approx. 19.2Kg
Terminal	M8
Operating Conditions	
Charging Temperature	0°C ~ 45°C (32°F ~ 113°F)
Discharge Temperature	-20°C ~ 60°C (-4°F ~ 140°F)
Storage Temperature	0°C ~ 45°C (32°F ~ 113°F)
Safety Standard	UL 1642 at cell level
Water Dust Resistance	IP55

Multipurpose Lithium-ion Battery

F-LFP12150

12.8V150AH



F-LFP12100

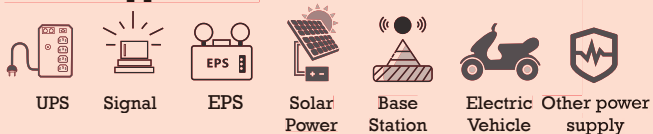
12.8V100AH

Lithium 12.8V 100AH Battery is a suitable SLA battery Replacement for UPS, Signal, EPS, Solar Power, Base Station, Electric Vehicle, etc.

Product Features:

- LiFePO₄ cell (3.2V), higher reliability
- Longer Cycle Life
- Fully replaceable with current batteries (Lead-acid, Ni-Cd)
- Lithium iron phosphate technology, safe and reliable.
- Maintenance free with 50% lighter than lead acid batteries
- Optimum adaptation to variety of applications with series & parallel expansion support

Product Application:



Scan for Data Sheet



Nominal Characteristics	
Nominal Voltage	12.8V
Nominal Capacity	100Ah (4S1P)
Nominal Energy	1280Wh
Internal Resistance	≤45mΩ
Self Discharge Rate	<3.5% per month
Cycle Life (@25°C, 0.2C, 50%DOD)	6000 Cycles
Parallel Connected Function	no more than 4 groups
Series Connected Function	no more than 4 groups
Charging Specifications	
Recommended Charging Voltage	14.0~14.6V
Max. Charging Current	50A
Discharging Specification	
Discharging Cut-off Voltage	10V
Max. Discharging Continuous Current	100A
Max. Discharging Pulse Current	200 A ≤ 3S
Mechanical Characteristics	
Length	328mm
Width	172mm
Height	215mm
Total Height	220mm
Weight	Approx. 13.1Kg
Terminal	M8
Operating Conditions	
Charging Temperature	0°C ~ 45°C (32°F ~ 113°F)
Discharge Temperature	-20°C ~ 60°C (-4°F ~ 140°F)
Storage Temperature	0°C ~ 45°C (32°F ~ 113°F)
Safety Standard	UL 1642 at cell level
Water Dust Resistance	IP55

Multipurpose Lithium-ion Battery F-LFP12100 12.8V100AH



F-LFP1260

12.8V60AH

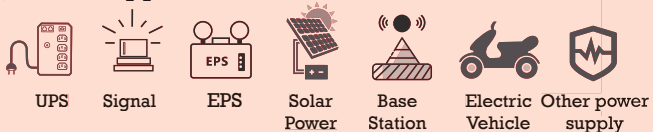
A 12.8V 60Ah lithium battery is suitable for a variety of applications, including solar energy systems, RVs, electric bikes and scooters, backup power systems, and more. It can also power wheelchairs, portable power banks, and even jump starters for vehicles.

They can also be used in portable power banks, jump starters for vehicles, and various other devices requiring a 12V power source.

Product Features:

- LiFePO₄ cell (3.2V), higher reliability
- Longer Cycle Life
- Fully replaceable with current batteries (Lead-acid, Ni-Cd)
- Lithium iron phosphate technology, safe and reliable.
- Maintenance free with 50% lighter than lead acid batteries
- Optimum adaptation to variety of applications with series & parallel expansion support

Product Application:



Scan for Data Sheet



Nominal Characteristics	
Nominal Voltage	12.8V
Nominal Capacity	60Ah (4S2P)
Nominal Energy	768Wh
Internal Resistance	≤50mΩ
Self Discharge Rate	<3.5% per month
Cycle Life (@25°C,0.2C,50%DOD)	6000 Cycles
Parallel Connected Function	no more than 2 groups
Series Connected Function	no more than 4 groups
Charging Specifications	
Recommended Charging Voltage	14.0~14.6V
Max. Charging Current	30A
Discharging Specification	
Discharging Cut-off Voltage	10V
Max. Discharging Continuous Current	60A
Max. Discharging Pulse Current	120 A ≤ 3S
Mechanical Characteristics	
Length	229mm
Width	138mm
Height	210mm
Total Height	210mm
Weight	Approx. 6.7Kg
Terminal	M6
Operating Conditions	
Charging Temperature	0°C ~ 45°C (32°F ~ 113°F)
Discharge Temperature	-20°C ~ 60°C (-4°F ~ 140°F)
Storage Temperature	0°C ~ 45°C (32°F ~ 113°F)
Safety Standard	UL 1642 at cell level
Water Dust Resistance	IP55

Multipurpose Lithium-ion Battery F-LFP1260 12.8V60AH





House # 2, Street # 63, Sector F-8/4, Islamabad - Pakistan.
Tel: +92-51-111-22-00-22



acmgroup.com.pk

Scan for E-Brochure

